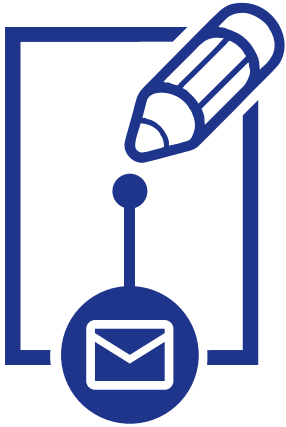


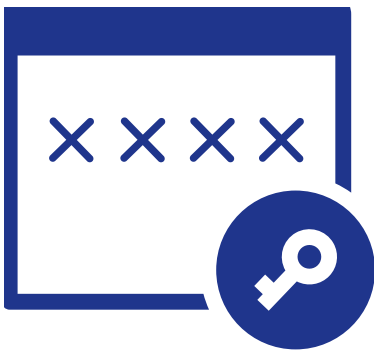
TEC Tools for Collaboration

Our Cloud-ready TEC Tools are the perfect companion suite for your iManage Work DMS, no matter your build, with tools to help your teams work more effectively together within iManage.



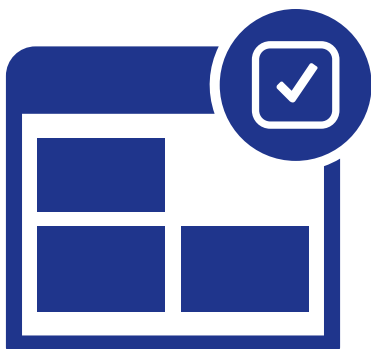
TEC Send and Sign: The DocuSign Integration for iManage

- Enables documents to be digitally signed and authorised from within your iManage Workspace, with a single right click action
- Automatically files signed documents to your iManage Workspace, allowing you to combine DocuSign's enhanced data security with iManage's compliance model, for enhanced security
- Allows you to authorise and sign documents without relying on paper print-outs.



TEC Decrypt for Collaboration on Encrypted Emails

- Enables users to easily find and decrypt encrypted emails stored within iManage, so relevant parties can collaborate on cases without the need for individual decryption
- Offers client peace-of-mind whilst increasing efficiencies within your firm



TEC Template Manager for Document Regulation

- Ensures compliance is maintained within your firm through the management of templates for key documentation
- Allows template access to be controlled so that only approved templates are used for each case, ensuring your documents are always compliant, up-to-date and in-line with company policies
- Enables you to maintain consistency across your branded materials, with the management of house styles, document layouts and key footer information